

## Contact and invoicing:

Planter's Punch GmbH  
Klausnerring 14 | 85551 Heimstetten | Germany  
Tel. +49 89 9006808-0 | Fax +49 89 9006808-9  
planter@planterspunch.de | www.planterspunch.de

Exhibitor

Hall / Stand no.

Outdoor exhibition area / Block

VAT no.

Contact

Street / P.O. Box

E-mail

Country / Town / Postcode

Tel. with area code and ext.

We herewith order the following on the rental terms quoted (kindly note that your signature is required on page 4).  
Please note: kindly order vessels/cover pots for rental plants separately via page 2 of this form.

## ■ Palms

Quantity	Plant	Height / cm	EUR / unit
	Areca palm with attractive, feathery fronds. Cover pot up to 45 cm. Suitable for indoors only.	150	36.00
		180	46.00
		200	51.00
	Kentia palm with delicate fronds. Cover pot up to 45 cm. Suitable for indoors only.	150	36.00
		180	46.00
		210	56.00
	Chamaerops palm tree. Sturdy palms, also suitable for outdoor use.	170	50.00
		200	70.00
		220	80.00
		250	90.00

## ■ Broad-leaved / Woody Plants, Shrubs

Quantity	Plant	Height / cm	EUR / unit
	Ficus benjamina. Evergreen classic with dense foliage. Cover pot up to 45 cm. Suitable for indoors only.	150	32.00
		180	45.00
	Ficus allii with longish leaves. Cover pot up to 40 cm. Suitable for indoors only.	140	32.00
		180	45.00
	Ficus lyrata with intensely bright, rich green leaves. Cover pot up to 45 cm. Suitable for indoors only.	160	42.00
	Monstera deliciosa with decorative, shiny dark green leaves. Suitable for indoors only.	160	50.00
	Strelitzia nicolai, slender plant with imposing banana-like foliage. Only suitable for indoors. Very beautiful in a tall vessel.	100	25.00
		150	42.00
		180	70.00

	Boxtree pyramid. Suitable for indoors and outdoors.	80	22.00
		120	34.00
		150	56.00
	Box sphere – best combined with the tall vessel Lechuza Cubico. Suitable for indoors and outdoors.	40	34.00
		60	42.00
		80	50.00
	Laurel pyramid. Attractive, dense foliage, suitable for indoors and outdoors. Cover pot up to 45 cm, from 230 cm, up to 60 cm high.	130	34.00
		180	46.00
	Laurel high-stem	140	34.00
		180	46.00
	Bamboo. Delicate, light green, suitable for indoors and outdoors. Cover pot min. 50 cm.	180	42.00
		220	49.00
		260	60.00
		300	80.00
	Citrus tree. With or without fruit depending on season, suitable for indoors and outdoors. Beautiful in a tall vessel.	140	45.00
	Olive tree. From 200 cm in height, strong tree with attractive trunk and robust top. Suitable for indoors and outdoors. Cover pot min. 50 cm.	150	32.00
		200	66.00
		250	110.00
		280	130.00
	Cherry laurel with saturated green foliage. Suitable for indoors and outdoors. Cover pot min. 50 cm.	150	32.00
		190	50.00
		210	65.00

## Vessels / Cover Pots

Quantity	Plant	Size in cm	EUR/unit
	Lechuza Classico, matt silver	up to 43	9.50
		50–68	17.00
	Lechuza, white	up to 43	9.50
		50–68	17.00
	Lechuza Cubico, white or charcoal gray	75 x 40	28.00
	Cube, charcoal-gray or white	40	13.00
		50	17.00
		up to 43	28.00
	Terracotta, light/dark	50	17.00
		up to 70	20.00
	Lechuza Classico, charcoal	up to 43	9.50
		50	17.00
		up to 70	32.00
	Lechuza Cararo, charcoal gray or white	150 x 63	33.00
	Illuminated vessel	150 x 63	44.00

## Complete Arrangements—Rental Goods

Quantity	Complete vessels	Height in cm	EUR/unit
	Floor vessel 01* L 75 x W 30/H 50 cm with sansevieria mikado	120	88.00
	Floor vessel 02* L 75 x W 30/H 50 cm with spathiphyllum	130	75.00
	Floor vessel 03* L 75 x W 30/H 50 cm with cherry laurel	120	70.00
	High vessel 05* L 40 x W 40/H 75 cm with sansevieria mikado	150	88.00
	High vessel 07* L 40 x W 40/H 75 cm with sansevieria laurenti	140	70.00
	High vessel 08* L 40 x W 40/H 75 cm with spathiphyllum	140	60.00
	High vessel 09* L 40 x W 40/H 75 cm with zamioculca	150	60.00
	High vessel 10* L 40 x W 40/H 75 cm with areca palm	180	65.00

\* Design may vary according to season, because not all flowers are available all year round. See illustrations on page 6.

## Room Dividers / Hedges and Vertical Decoration Elements—Rental Goods

Quantity	Room dividers/Hedges	Height in cm	EUR/unit
	Trough planter, charcoal-gray L 100 x W 40/H 50 with bamboo stems Ø 9 cm	190	122.00
	Cube, white L 40 x W 40/H 40 with bamboo stems Ø 4 cm	190	39.00
	High vessel L 40 x W 40/H 75 with bamboo stems Ø 4 cm	250	39.00
	Module L 34 x W 34 with bamboo stems Ø 4 cm for individual arrangement	180	26.00

	Room divider with 12 birch trunks, natural Ø 6 cm: floor dim. L 100 x W 28	180	100.00
	Planting with asparagus falcatus, height ca. 45 cm (without plant box)	20 cm wide, per lm	from 88.00
	Planting with cyperus alternifolius, height ca. 50 cm (without plant box)	20 cm wide, per lm	from 88.00
	Evergreen moss wall made of real moss; modular design, <b>without installation</b>	per m²	from 56.00
	Green wall with natural green plants. The wall is created from various green plants in consultation with the customer.		on request

\* see illustrations on page 6

## Booth Perimeter Planter Boxes

(Filling of existing planter boxes)

Quantity	Room dividers/Hedges	Height in cm	EUR/unit
	Reeds according to seasonal availability, up to 50 cm above the rim**	per lm	from 110.00
	Tall reeds according to seasonal availability, up to 120 cm above the rim**	per lm	from 140.00
	Mixed plantings up to 40 cm above the rim**	per lm	from 115.00

\*\* Maximum inner dimensions of planter box L 100 x W 25 x H 20 cm. Seasonal alternatives and box sizes possible. Please let us know the inner dimensions of your boxes to be planted (L x W x D in cm).

## Lectern Arrangements and Floor Vases

Quantity	Lectern arrangements and floor vases	EUR/unit
	as agreed, design as desired	from 130.00

## Table Arrangements for Bistro Tables

Quantity	Table arrangements	EUR/unit
	Table arrangement 01*, glass cube 10 x 10 cm, height 10 cm, white rose	20.00
	Table arrangement 02*, glass cube 10 x 10 cm, height 12 cm, gerbera	20.00
	Table arrangement 03*, white cube 10 x 10 cm, height 20 cm, strelitzia	34.00
	Table arrangement 04* white cube 10 x 10 cm, height 10 cm, e.g. tulips	30.00
	Table arrangement 05*, glass vase Ø 10 cm, height 10 cm, red rose	20.00
	Table arrangement 06*, glass cube 19 x 19 cm, gravel, calla, ornithogallum, white carnation, height total 30 cm	38.00
	Table arrangement 07*, glass cube 10 x 10 cm, height 18 cm, white calla, blue thistle	25.00
	Table arrangement 08*, glass cube 10 x 10 cm, yellow gerbera, white gravel, height 10 cm	28.00
	Table arrangement 09* glass cube 10 x 10 cm, height 15 cm, calla + gravel white	25.00

\* Design may vary according to season, because not all flowers are available all year round. See illustrations on page 7.

## ■ Large Table Arrangements

Quantity	Table arrangements	EUR/unit
	Table arrangement 10* glass vase, round Ø 17 cm, height 15 cm, orchid	30.00
	Table arrangement 11* white cube 12 x 12 cm, height 25 cm, caribea + gerbera	30.00
	Table arrangement 12* glass bowl Ø 16 cm, moss, calla, ornithogallum, white carnation + freesia, height total 35 cm	33.00
	Table arrangement 13* glass vessel 15 x 10 cm, white calla + ornithogallum, eucalyptus, aspidistra leaf, height 25 cm	33.00
	Table arrangement 14* glass cube 12 x 12 cm, height 20 cm, white calla	33.00
	Table arrangement 15* glass vase Ø 15 cm, height 15 cm, natural gravel, orchid flower, ornamental add-ons	24.00
	Table arrangement 16* glass cube 15 x 15 cm, blue hydrangea, white roses, height 15 cm	25.00

\* Design may vary according to season, because not all flowers are available all year round. See illustrations on page 7.

## ■ Counter Arrangements

Quantity	Counter Arrangements	EUR/unit
	Counter arrangement 01*, flower bouquet, loosely arranged in glass vase, color to choice, height total 50 cm	85.00
	Counter arrangement 02*, glass bowl Ø 20 cm, height 50 cm, white calla	55.00
	Counter arrangement 03*, glass cube 15 x 15 cm, height 25 cm, strelitzias, eucalyptus, greenery	58.00
	Counter arrangement 04*, glass cylinder Ø 18 cm, height 50 cm, yellow calla, greenery	90.00
	Counter arrangement 05*, glass cylinder Ø 24 cm, height 70 cm, caribea	90.00
	Counter arrangement 06*, glass cylinder Ø 24 cm, height 70 cm, orchid	90.00
	Counter arrangement 07*, glass cylinder Ø 24 cm, height 75 cm, white calla, moss + bamboo stems	95.00
	Counter arrangement 08*, white vessel, rectangular L35 x W10 cm, height 45 cm, white calla + ornithogallum, reeds	70.00
	Counter arrangement 09*, white cube 10 x 10 cm, height 40 cm, orchid	45.00
	Counter arrangement 10* glass cube 15 x 15 cm, height 25 cm, seasonal flowers, light green	57.00
	Counter arrangement 11* glass cube 16 x 16 x H 22, with orange protea, white calla, twigs + add-ons, height total 65 cm	80.00
	Counter arrangement 12* glass vessel 30 x 15 cm, calla, ornithogallum, white hyacinth, Sweet William, green aspidistra leaf, height total 50 cm	90.00
	Counter arrangement 13* glass cube 15 x 15 cm, height 45 cm, seasonal flowers in white and blue	65.00

\* Design may vary according to season, because not all flowers are available all year round. See illustrations on pages 7 and 8

## ■ General Terms and Conditions of Business governing rental goods and floristry provided by Planter's Punch GmbH (valid at the Messe München GmbH exhibition grounds)

Rental goods are supplied for the duration of the trade fair event. The prices include the cost of delivery and collection. The invoice amount is due for payment prior to or upon delivery of the rental goods. All items in the rental plants and vessels segment are provided on a rental basis and remain the property of Planter's Punch GmbH.

We reserve the right to make delivery subject to payment in advance or direct debit from a credit card, notably in the case of orders placed by customers based abroad. The delivery of all orders made without stipulation of a delivery date and time occurs in a timely manner such that the rental goods are available to the customer at the start of the event. Cancellation is possible up to eight days prior to the agreed delivery date. The agreed rental / purchase price is charged in full thereafter. Such rental goods as are ordered in advance and reserved but not accepted by the hirer are to be charged in full to the latter.

Liability commences with the handing over of the rental goods to the hirer and finishes two hours after the official end of the event, in the absence of any agreement to the contrary.

The contractor must have unhindered access to the rental goods. Should access to rental goods be hindered, each additional journey made for this reason is to be charged separately. Complaints must be lodged within 24 hours of delivery. Complaints lodged after this time will not be accepted.

For damage to or loss of the rental goods, claims for the replacement value can be asserted against the hirer. In the case of force majeure, the lessor reserves the right to supply equivalent goods or goods of a higher value instead of those ordered. On cut flowers and small plants, seasonal variations may occur. The place of fulfilment and jurisdiction for both the hirer and the lessor is the location of the lessor's registered office.

The law of the Federal Republic of Germany applies for all transactions including those with foreign customers.

For orders up to EUR 100.00, we charge a flat delivery fee of EUR 20.00; for orders over EUR 100.00, delivery to the Munich exhibition center is free of charge.

Any contract agreed is concluded directly between the exhibitor and Messe München GmbH's contracting company.

**Kindly order cover pots for rental plants separately via this form on page 2 (vessels / cover pots). We would be pleased to give you a quote for the decoration, design or arrangement of your choice.**

**All prices listed on the order forms are net and subject to statutory VAT.**

Fax: +49 89 9006808-9  
E-Mail: [planter@planterspunch.de](mailto:planter@planterspunch.de)

## ■ Method of Payment

Orders payable via direct debit from a credit card

☐ MasterCard ☐ Visa Card

Name of holder

Card number

Card validation number (3- or 4-digit code on rear of card)

Valid until

Orderer (if different from the exhibitor)

Contact

VAT no.

E-mail

Street / P.O. Box

Tel. with area code and ext.

Fax with area code and ext.

Country / Town / Postcode

Place / date

Company stamp and legally binding signature of exhibitor

Kindly order cover pots for rental plants separately via page 2 of this form (vessels / cover pots).

Palms



Areca palm



Kentia palm



Chamaerops palm

Leafy shrubs



Ficus benjamina



Ficus allii



Ficus lyrata



Monstera deliciosa



Strelitzia nicolai



Box cone



Box sphere



Laurel pyramid



Laurel high-stem



Bamboo



Citrus tree



Olive tree



Cherry laurel

Cover pots /  
Vessels



Lechuza Classico,  
matt silver



Lechuza, white



Cube, charcoal



Cube, white



Terracotta, light/dark



Lechuza Classico,  
charcoal



Lechuza Cararo,  
charcoal



Lechuza Cararo, white



Illuminated  
vessel



Lechuza Cubico, white



Lechuza Cubico, charcoal



Rental goods  
Complete vessels



Floor vessel 01  
L 75 x W 30 / H 50 cm –  
with sansevieria mikado



Floor vessel 02  
L 75 x W 30 / H 50 cm –  
with spathiphyllum



Floor vessel 03  
L 75 x W 30 / H 50 cm –  
with cherry laurel



Tall vessel 04  
L 40 x W 40 / H 75 cm  
with sansevieria mikado



Tall vessel 05  
L 40 x W 40 / H 75 cm  
with sansevieria mikado



Tall vessel 07  
L 40 x W 40 / H 75 cm  
with sansevieria laurenti



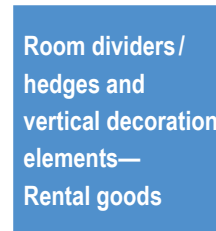
Tall vessel 08  
L 40 x W 40 / H 75 cm  
with spathiphyllum



Tall vessel 09  
L 40 x W 40 / H 75 cm  
with zamioculca



Tall vessel 10  
L 40 x W 40 / H 75 cm  
with areca palm



Room dividers /  
hedges and  
vertical decoration  
elements—  
Rental goods



Trough planter charcoal  
L 100 x W 40 / H 50 cm with  
bamboo stems 9 cm, total  
height 1.9 m



White cube L 40 x W 40 /  
H 40 with bamboo stems  
4 cm, total height 1.90 m



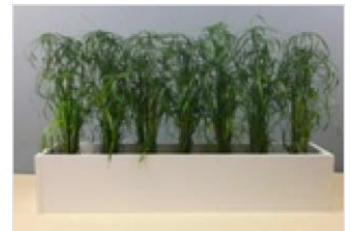
Tall vessel L 40 x W 40 /  
H 75 with bamboo stems  
4 cm, total height 2.5 m



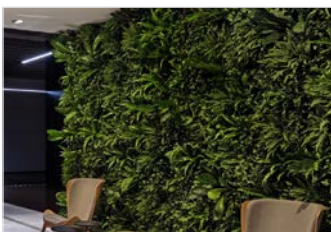
Room divider with 12 birch  
trunks, natural, 6 cm, total  
height 1.8 m



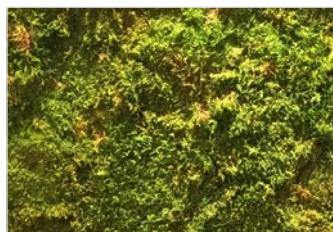
Planting with asparagus falcatus,  
height ca. 45 cm



Planting with cyperus alternifolius  
height ca. 50 cm



lebende Wand



Moss wall—cushion moss



Reeds according to seasonal availability,  
up to 50 cm above the rim



Tall reeds according to seasonal availability,  
up to 120 cm above the rim



Mixed plantings, upto 40 cm above the rim

Purchase items  
Floristry for bistro  
tables



Table arrangement 01  
glass cube 10 x 10 cm,  
height 10 cm, white rose



Table arrangement 02  
glass cube 10 x 10 cm,  
height 12 cm, gerbera



Table arrangement 03  
white cube 10 x 10 cm,  
height 20 cm, strelitzia +  
greenery



Table arrangement 04  
white cube 10 x 10 x  
10 cm, e.g. tulips



Table arrangement 05  
glass vase Ø 10 cm,  
height 10 cm, red rose



Table arrangement 06  
glass cube 19 x 19 cm, gravel,  
calla, ornithogallum, white  
carnation, height total 30 cm



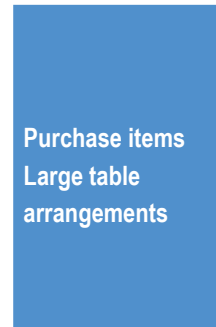
Table arrangement 07  
glass cube 10 x 10 cm,  
calla+gravel, blue thistle,  
height 18 cm



Table arrangement 08  
white cube 10 x 10 cm,  
yellow gerbera, white  
gravel, height 10 cm



Table arrangement 09  
glass cube 10 x 10 cm,  
white calla+gravel,  
height 15 cm



Purchase items  
Large table  
arrangements

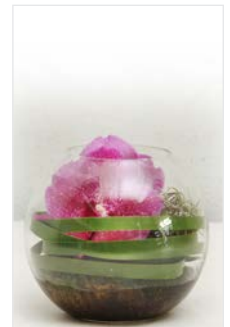


Table arrangement 10  
glass vase round Ø 17 cm,  
height 15 cm, orchid



Table arrangement 11  
white cube 12 x 12 cm,  
height 25 cm, caribea +  
gerbera



Table arrangement 12  
glass bowl Ø 16 cm, moss,  
calla, ornithogallum, carna-  
tion + freesia, height 35 cm



Table arrangement 13  
square glass vessel, white  
calla, ornithogallum,  
aspidistra leaf, height 25 cm



Table arrangement 14  
glass cube 12 x 12 cm,  
height 20 cm, white calla



Table arrangement 15  
round glass vase Ø 15 cm,  
15 cm high, orchid flower,  
natural gravel



Table arrangement 16  
glass cube 15 x 15 x 15 cm  
blue hydrangea, white  
roses

Purchase items  
Counter



Counter arrangement 01  
flower bouquet, loosely ar-  
ranged in glass vase, color  
to choice, height total 50 cm



Counter arrangement 02  
glass dish Ø 20 cm,  
height 50 cm, white calla



Counter arrangement 03  
glass cube 15 x 15 cm,  
height 25 cm, strelitzias +  
eucalyptus



Counter arrangement 04  
glass cylinder Ø 18 cm,  
height 50 cm, yellow calla,  
greenery



Counter arrangement 05  
glass cylinder Ø 24 cm,  
height 70 cm, caribea



Counter arrangement 06 \*  
glass cylinder Ø 24 cm,  
height 70 cm, orchid



Counter arrangement 07  
glass cylinder Ø 24 cm,  
height 75 cm, white calla,  
moss + bamboo stems



Counter arrangement 08  
white vessel square, 35 x 10  
cm, height 45 cm, white cal-  
la + ornithogalum, reeds



Counter arrangement 09  
white cube 10 x 10 cm,  
height 40 cm, orchid



Counter arrangement 10  
glass cube 15 x 15 cm,  
height 25 cm, seasonal  
flowers, light green



Counter arrangement 11 \*\*  
glass cube, orange protea,  
white calla, twigs, height  
65 cm



Counter arrangement 12 \*  
rect. glass vessel, white calla,  
hyacinth, green Sweet Willi-  
am, add-ons, height 50 cm



Counter arrangement 13  
glass cube 15x15 cm,  
seasonal flowers in white  
and blue, height 45 cm

\* Color as desired

\*\* Color and variety as desired